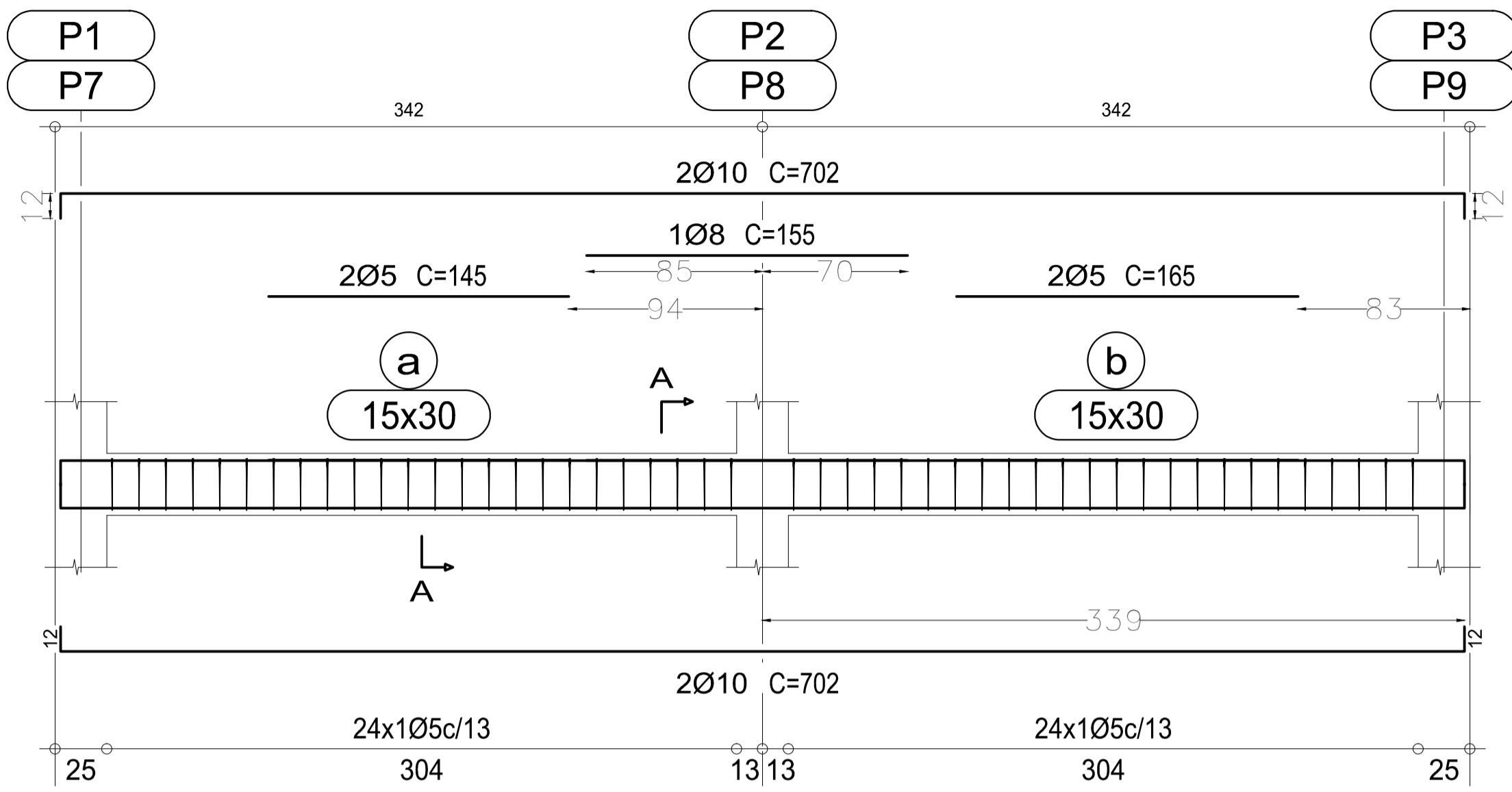
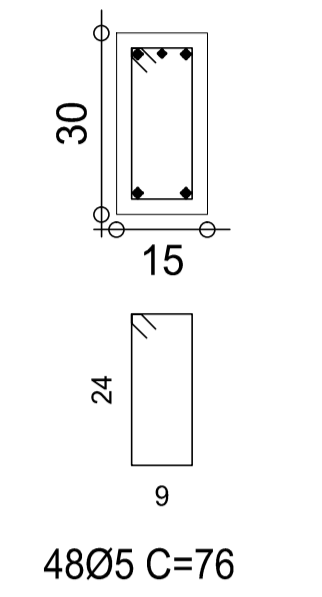


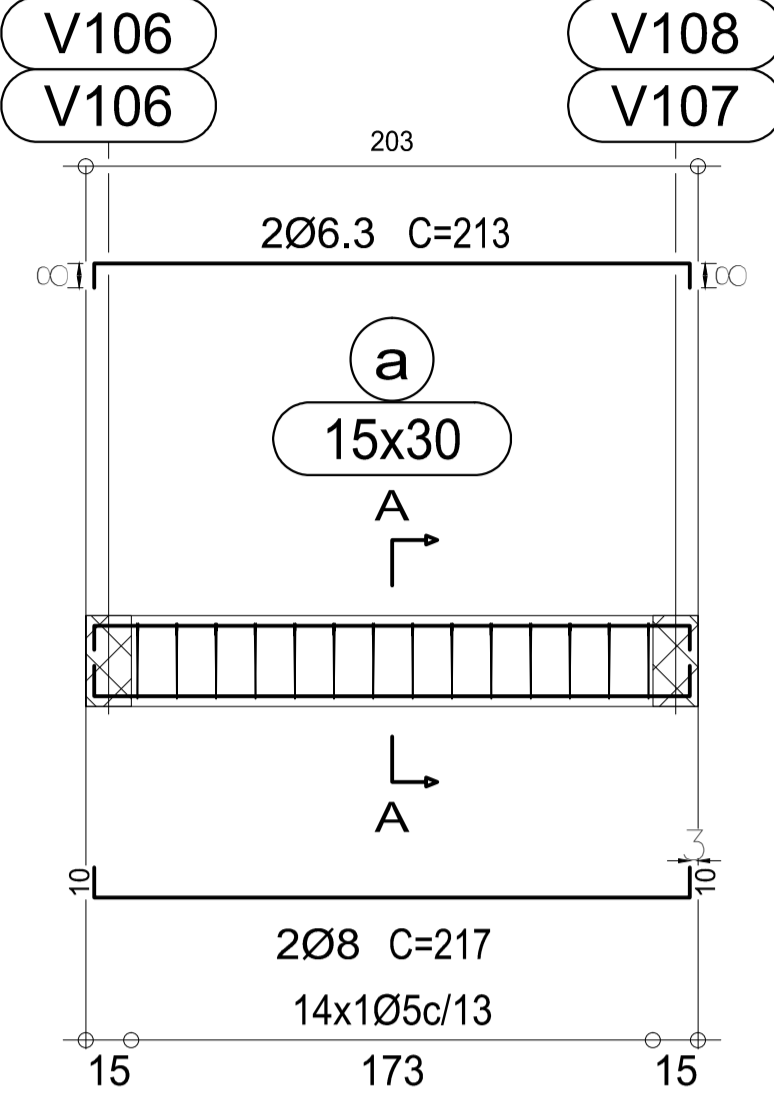
V101  
V105  
Escala 1:50



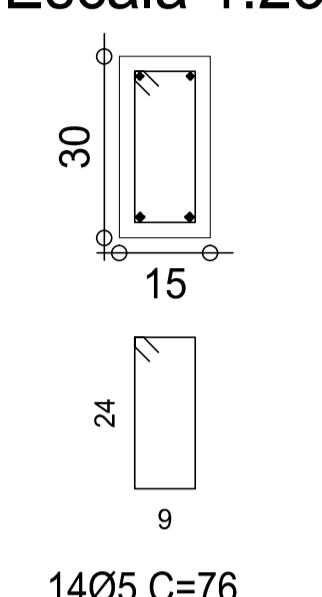
Corte A  
Escala 1:25



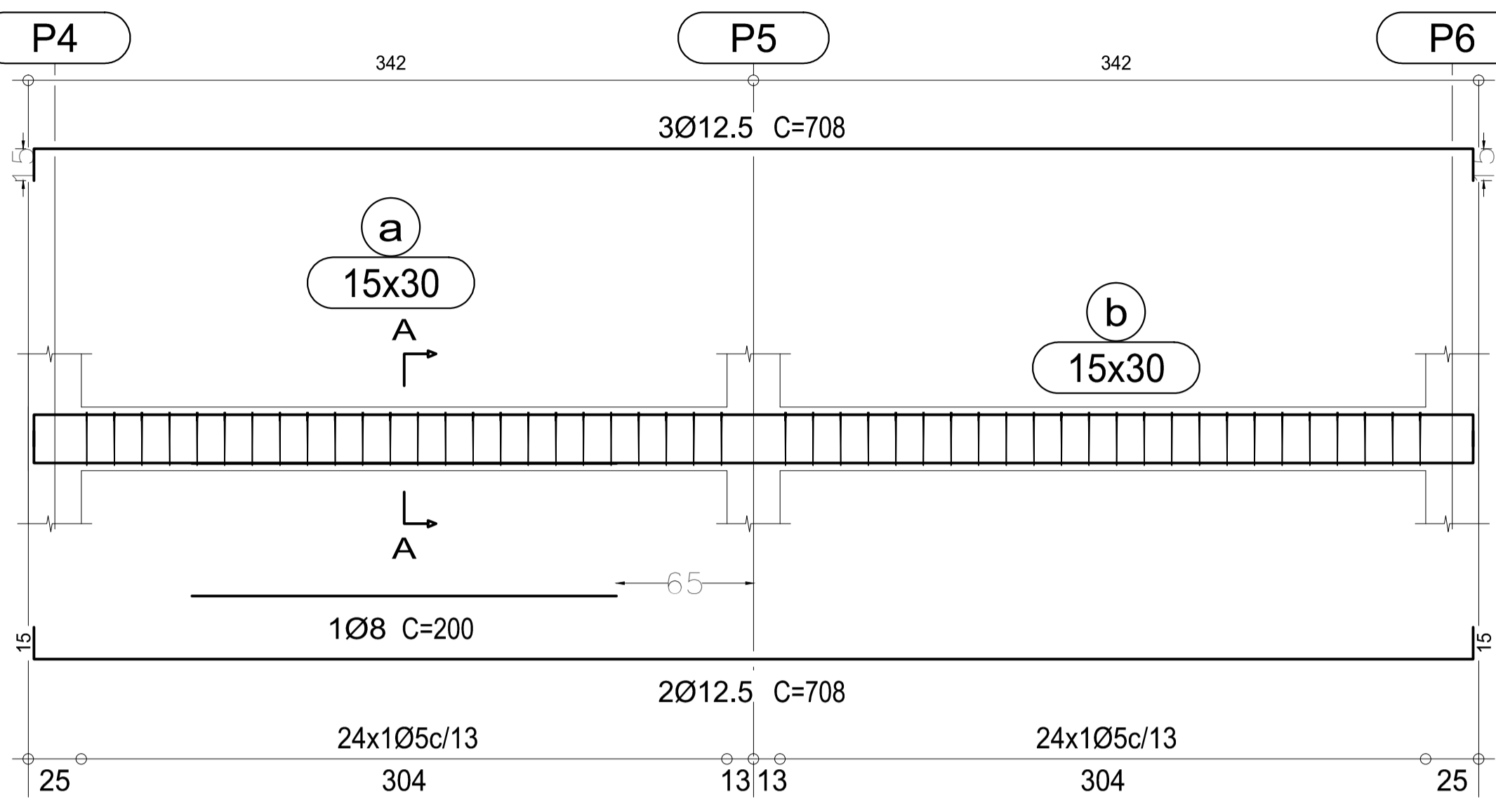
V102  
V104  
Escala 1:50



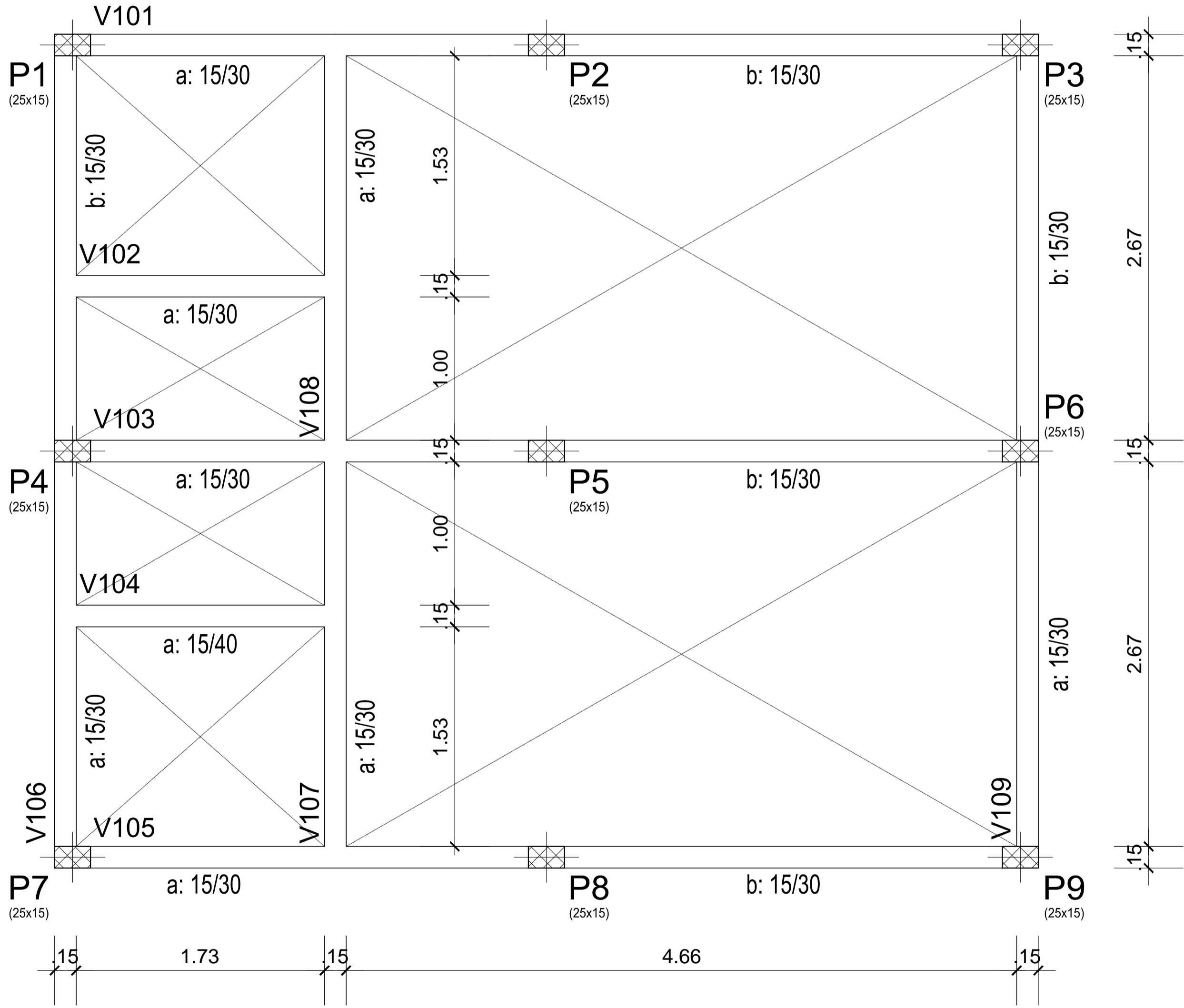
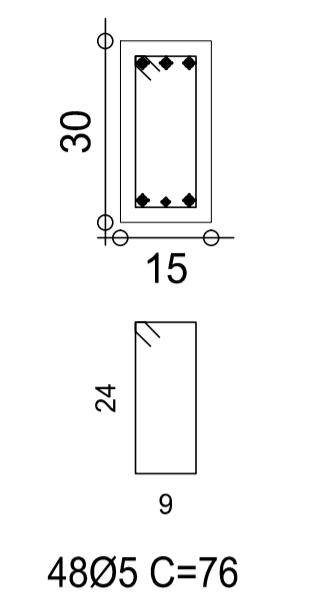
Corte A  
Escala 1:25



V103  
Escala 1:50



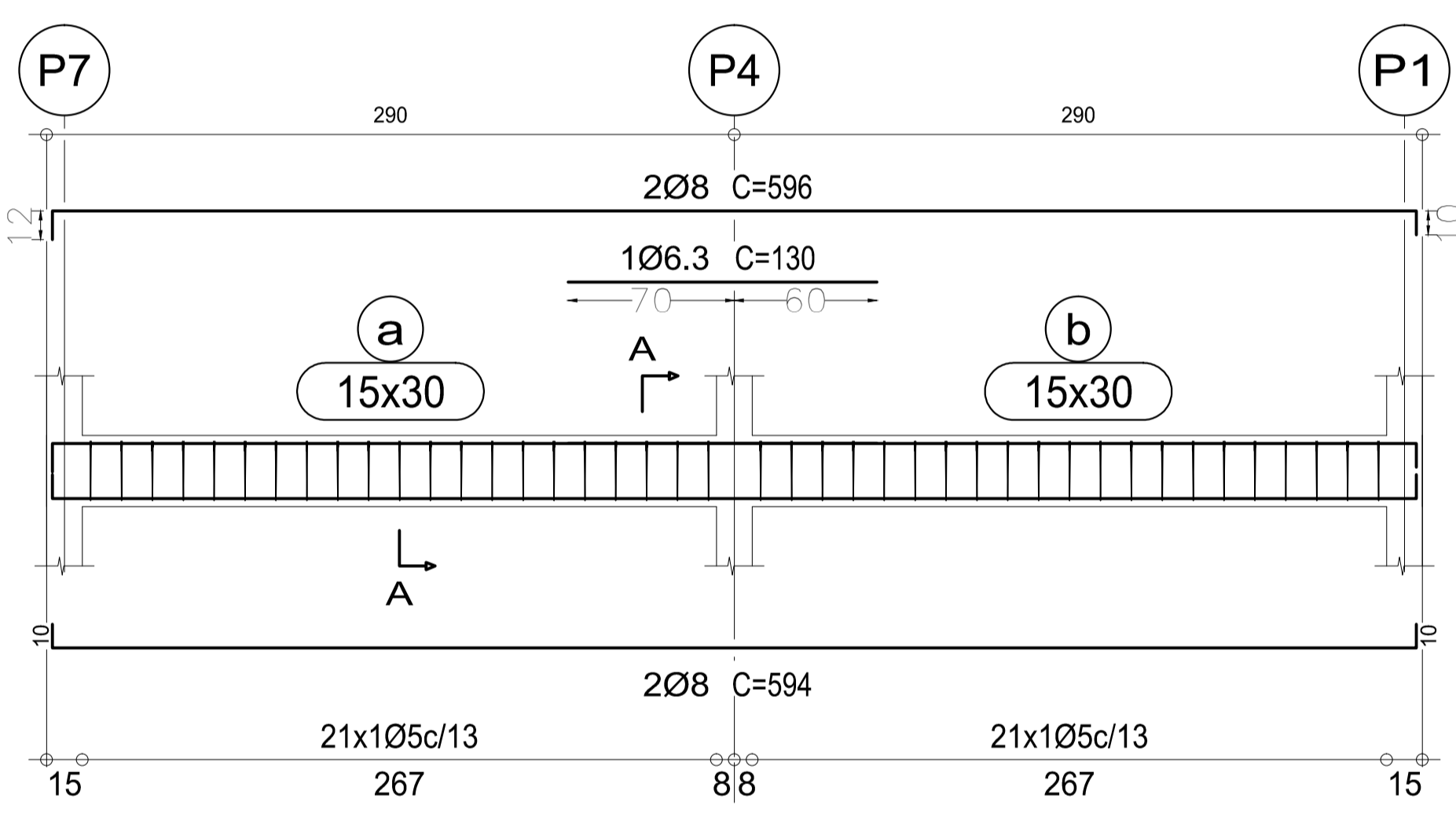
Corte A  
Escala 1:25



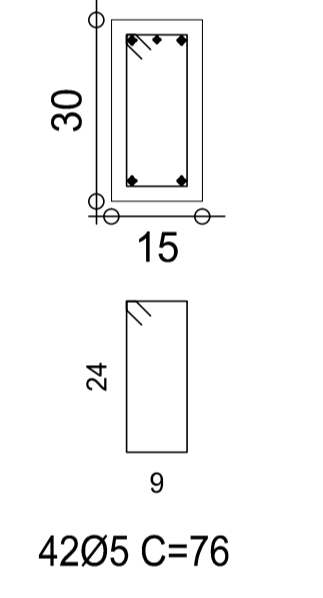
Terreo  
Fôrmas  
Escala: 1:25

Terreo			
Elemento	Fôrmas (m2)	Volume (m3)	Barras (kg)
Vigas	22.62	1.840	144
Índices (por m2)	3.770	0.307	24.00
Superfície total: 6.00 m2			

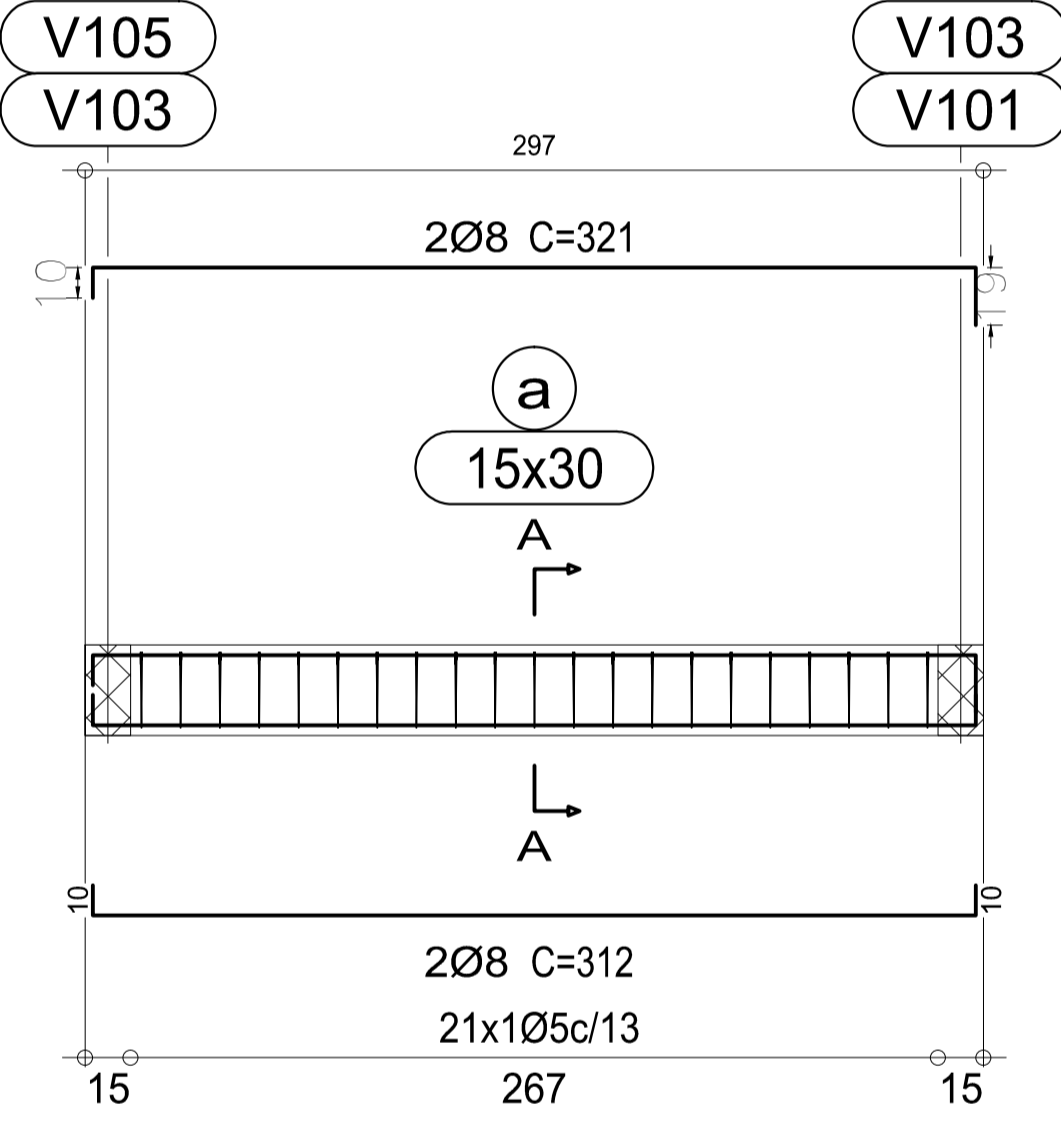
V106  
Escala 1:50



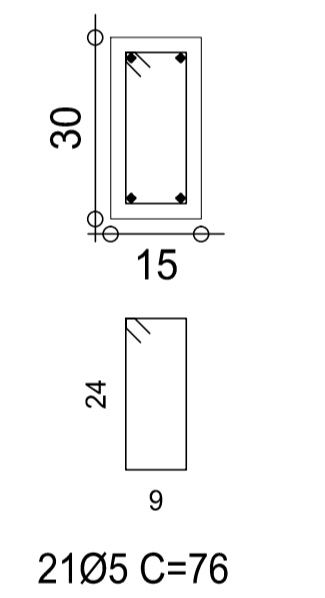
Corte A  
Escala 1:25



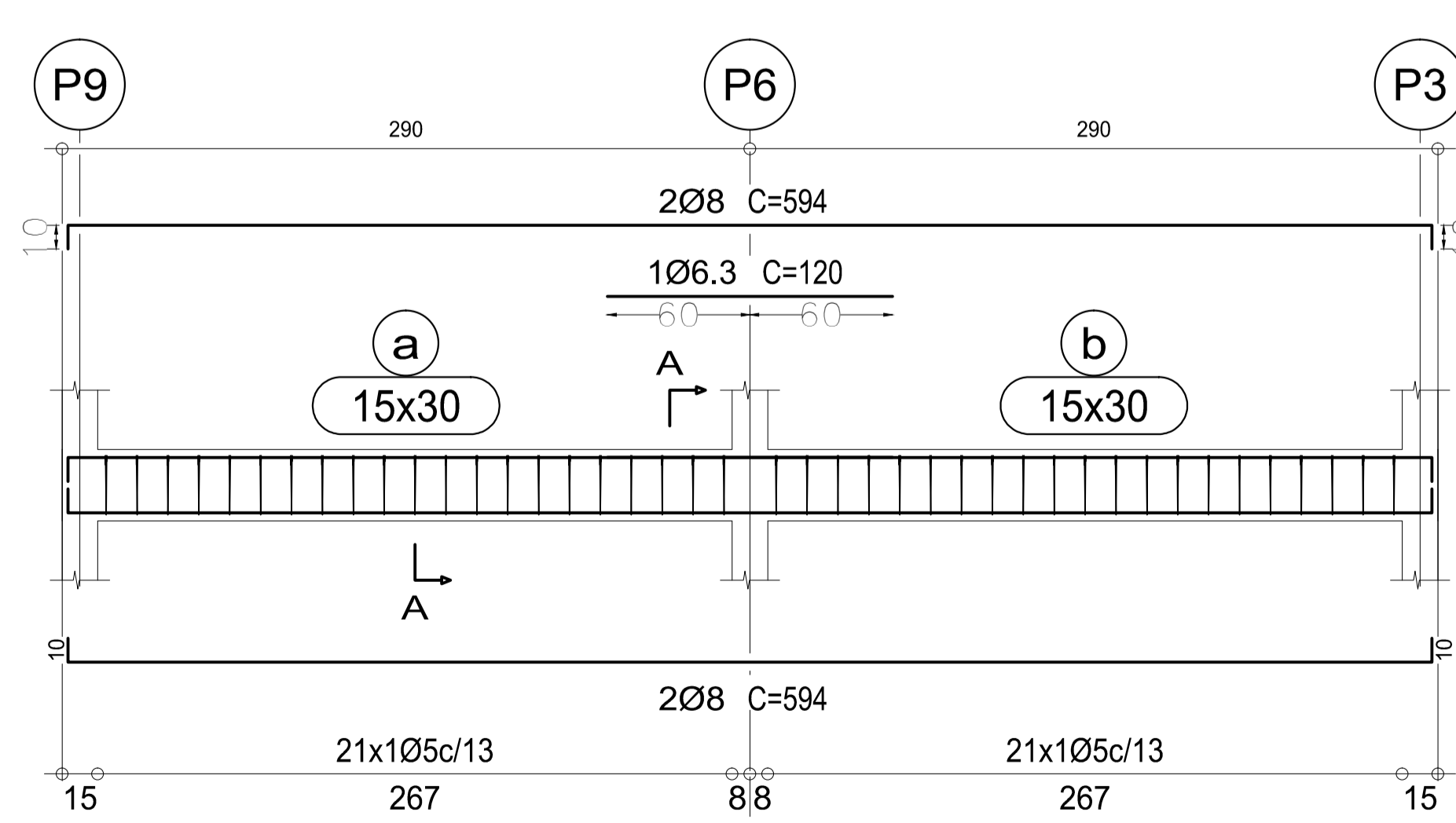
V107  
V108  
Escala 1:50



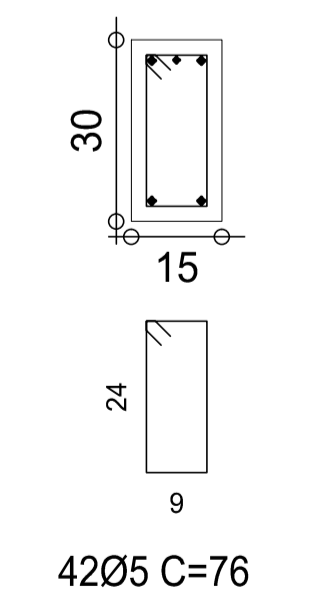
Corte A  
Escala 1:25



V109  
Escala 1:50



Corte A  
Escala 1:25



Terreo  
Desenho de vigas  
Concreto: C25, em geral  
Aço: CA-50-A e CA-60-B  
Escala vigas: 1:50  
Escala seções: 1:25

Resumo Aço	Terreo	Comp. total (m)	Peso (kg)
CA-50-A	Ø6.3	11.0	3
	Ø8	86.7	34
	Ø10	56.2	35
	Ø12.5	35.4	35
CA-60-B	Ø5	241.0	37
Total			144

**INSTITUTO FEDERAL**  
Sul-rio-grandense  
Campus Pelotas-Visconde da Graça  
AV. RIBEIRÃO SÍMÕES LOPES, 2791 - BARRIO TRÊS VEDRAS  
CEP 96000-290 - PELOTAS/RS  
(51) 3308.5550/3309.5580 - cpln@ifrsul.edu.br

RESPONSÁVEL TÉCNICO  
PROJETO

RESPONSÁVEL TÉCNICO  
EXECUÇÃO

PROPRIETÁRIO

PLATÃO TAVARES ALVES DA FONSECA  
CREA-RS 47001

**BLOCO DE SANITÁRIOS E COBERTURA**

AV. RIBEIRÃO SÍMÕES LOPES, 2791 - PELOTAS/RS

**PROJETO ESTRUTURAL**

ÁREA DA OBRA  
75.94 m²

FÔRMAS E ARMADURAS DAS VIGAS DO TÉRREO

DATA  
JULHO/2020

ESCALA  
INDICADA

PRANCHAS  
PES 03/06

DESENHO

DATA

ESCALA

INDICADA

OBRA

CV/02/2020

VIGAS TERREO  
ESCALA: 1/25